

# CREEK WATERS

DUBAI CREEK HARBOUR



EMAAR

# CREEK WATERS

DUBAI CREEK HARBOUR

EMAAR



# CREEK WATERS

DUBAI CREEK HARBOUR



# CREEK WATERS

DUBAI CREEK HARBOUR

EMAAR



# CREEK WATERS

DUBAI CREEK HARBOUR

EMAAR

Creek Waters



# CREEK WATERS

DUBAI CREEK HARBOUR

Project	Type	APROX Total Area	Aprox Price AED	Aprox Price \$
Creek Waters - 3 BED	Apt	1650 SQFT	AED 3,150,000	\$ 863,014
Milestone	%	Date	Total Amount (AED)	About \$
1st Instalment	10%	Booking	AED 315,000	\$ 86,301
2nd Instalment	10%	Jun-23	AED 315,000	\$ 86,301
3rd Instalment	10%	Dec-23	AED 315,000	\$ 86,301
4th Instalment	10%	Jun-24	AED 315,000	\$ 86,301
20% Construction	15%	Feb-25	AED 472,500	\$ 129,452
40% Construction	15%	Sep-25	AED 472,500	\$ 129,452
60% Construction	10%	Apr-26	AED 315,000	\$ 86,301
80% Construction	10%	Oct-26	AED 315,000	\$ 86,301
100% Construction	10%	Sep-27	AED 315,000	\$ 86,301
<b>Total</b>	<b>100%</b>		<b>AED 3,150,000</b>	<b>\$ 863,014</b>



# CREEK WATERS

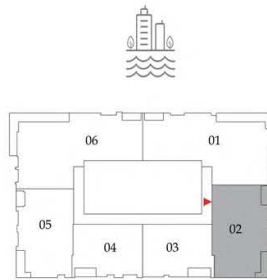
DUBAI CREEK HARBOUR

## 3 BEDROOM

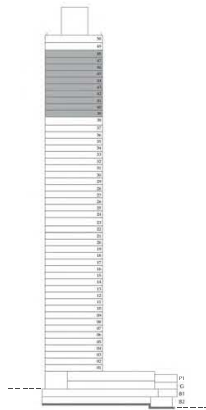
LEVEL 39 - 48 UNIT 02

SUITE AREA	1,479.93 SQ. FT.	137.49 SQ .M.
BALCONY AREA	177.60 SQ. FT.	16.50 SQ .M.
TOTAL AREA	1,657.53 SQ. FT.	153.99 SQ .M.

KEY PLAN



KEY SECTION



FLOOR PLAN 1. All dimensions are in imperial and metric, and measured from finish to finish excluding construction tolerances. 2. All materials, dimensions, and drawings are approximately only. Information is subject to change without notice, at developer's absolute discretion. 4. Actual area may vary from the stated area. 5. Drawings not to scale. 6. All images used are for illustrative purposes only and do not represent the actual size, features, specifications, fittings, and furnishings. 7. The developer reserves the right to make revisions / alterations, at it's absolute discretion, without any liability whatsoever.