

CREEK WATERS

DUBAI CREEK HARBOUR



EMAAR

CREEK WATERS

DUBAI CREEK HARBOUR

EMAAR



CREEK WATERS

DUBAI CREEK HARBOUR



CREEK WATERS

DUBAI CREEK HARBOUR

EMAAR



CREEK WATERS

DUBAI CREEK HARBOUR

EMAAR

Creek Waters



CREEK WATERS

DUBAI CREEK HARBOUR

Project	Type	APROX Total Area	Aprox Price AED	Aprox Price \$
Creek Waters - 1 BED	Apt	760 SQFT	AED 1,650,000	\$ 452,055
Milestone	%	Date	Total Amount (AED)	About \$
1st Instalment	10%	Booking	AED 165,000	\$ 45,205
2nd Instalment	10%	Jun-23	AED 165,000	\$ 45,205
3rd Instalment	10%	Dec-23	AED 165,000	\$ 45,205
4th Instalment	10%	Jun-24	AED 165,000	\$ 45,205
20% Construction	15%	Feb-25	AED 247,500	\$ 67,808
40% Construction	15%	Sep-25	AED 247,500	\$ 67,808
60% Construction	10%	Apr-26	AED 165,000	\$ 45,205
80% Construction	10%	Oct-26	AED 165,000	\$ 45,205
100% Construction	10%	Sep-27	AED 165,000	\$ 45,205
Total	100%		AED 1,650,000	\$ 452,055

CREEK WATERS

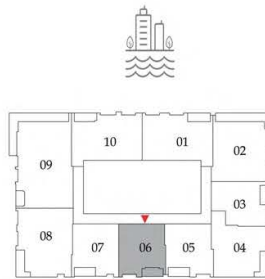
DUBAI CREEK HARBOUR

1 BEDROOM

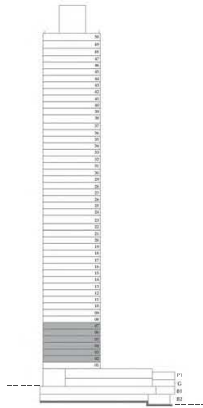
LEVEL 02 - 07 UNIT 06

SUITE AREA	674.57 SQ. FT.	62.67 SQ .M.
BALCONY AREA	78.90 SQ. FT.	7.33 SQ .M.
TOTAL AREA	753.47 SQ. FT.	70.00 SQ .M.

KEY PLAN



KEY SECTION



FLOOR PLAN 1. All dimensions are in imperial and metric, and measured from finish to finish excluding construction tolerances. 2. All materials, dimensions, and drawings are approximately only. Information is subject to change without notice, at developer's absolute discretion. 4. Actual area may vary from the stated area. 5. Drawings not to scale. 6. All images used are for illustrative purposes only and do not represent the actual size, features, specifications, fittings, and furnishings. 7. The developer reserves the right to make revisions / alterations, at it's absolute discretion, without any liability whatsoever.