

ELIE SAAB
Edition
Jasmine Lane





Disclaimer: All images used are for illustrative purposes only and do not represent the actual size, features, specifications, fittings, and furnishings. The developer reserves the right to make revisions / alterations, at its absolute discretion, without any liability whatsoever.



DEVELOPER NAME: DURAR PROPERTIES LLC
LOCATION: JUMEIRAH GOLF ESTATES
MAIN CONTRACTOR: Ali & Sons Contracting Co.
BRANDED: ELIE SAAB
ESTIMATED COMPLETION DATE: Q3 2024
ANTICIPATED SERVICE CHARGES: 5.5 AED PER SQFT ON BUILT UP AREA
HEIGHT: G + 1
PARKING PER UNIT: 2 NOS.
GUESTS PARKING: 26

UNITS & SIZES

BR TYPE	UNIT MIX %	Avg Size (sqft)
3BR (END) TYPE1	15%	2222
3BR (END) TYPE3	5%	2332
3BR (MID) TYPE2	80%	2201

WHITE GOODS:

- Fridge
- Cooker
- Microwave

Brand Name: Siemens or equivalent



Disclaimer: All images used are for illustrative purposes only and do not represent the actual size, features, specifications, fittings, and furnishings. The developer reserves the right to make revisions / alterations, at its absolute discretion, without any liability whatsoever.

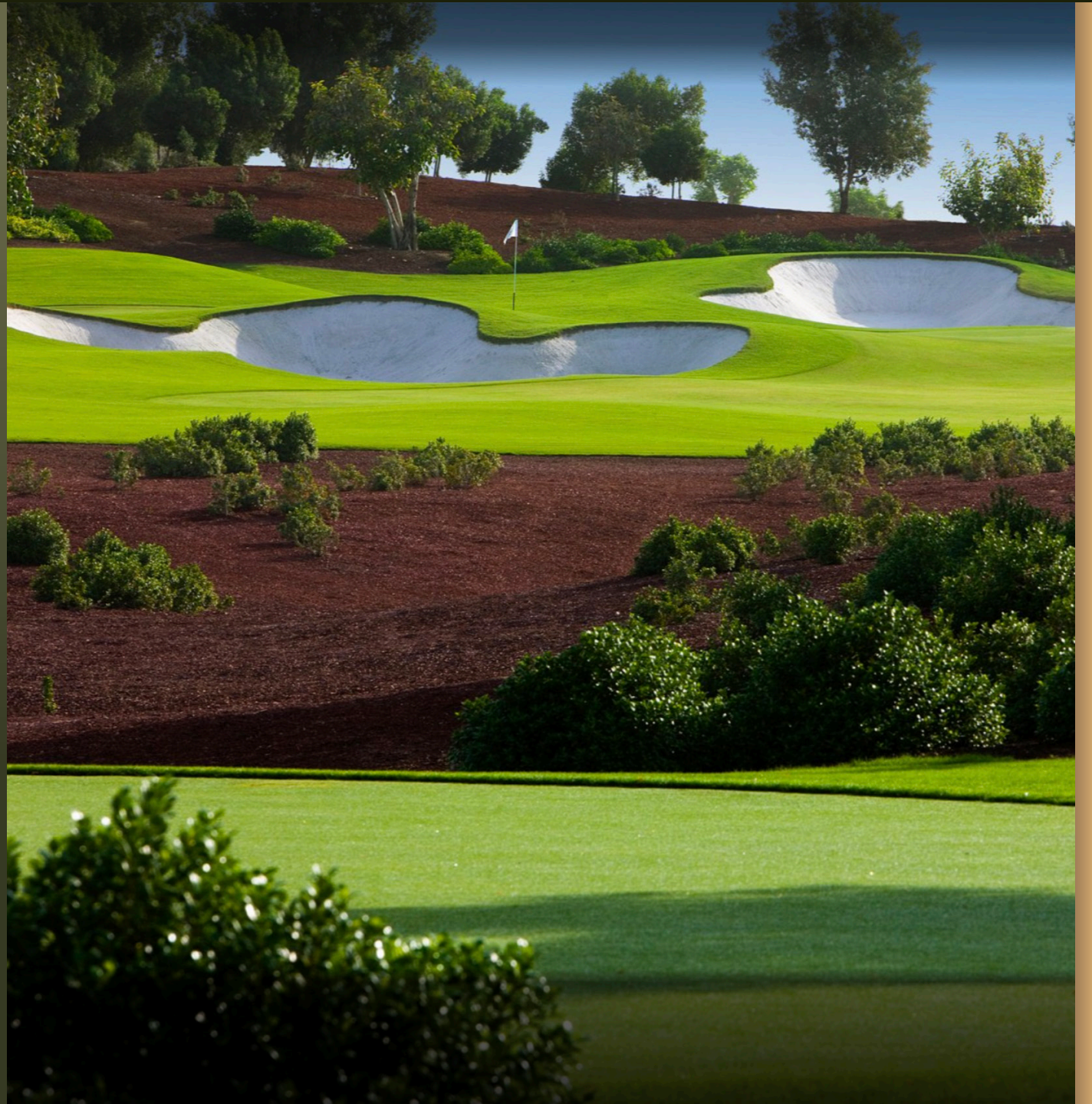


OVERVIEW

Jasmine Lane is a luxurious residential project located in the prestigious Jumeirah Golf Estates in Dubai. The project is developed by Durar Group, a developer known for its commitment to quality and luxury.

The project offers a range of spacious and elegantly designed villas that are surrounded by lush greenery and scenic views of the golf course. The community is equipped with state-of-the-art amenities and facilities, including private swimming pools, outdoor entertainment areas, and landscaped gardens.

With its prime location and luxurious features, Jasmine Lane is poised to become one of the most sought-after residential addresses in Dubai.



SITE LOCATION

1. JUMEIRAH GOLF ESTATES
2. SHEIKH MOHAMMED BIN ZAYED RD
3. SHEIKH ZAYED BIN HAMDAN AL NAHYAN STREET
4. JEBEL ALI VILLAGE
5. DUBAI BUTTERFLY GARDEN
6. MOTOR CITY
7. HESSA ST
8. AL KHAIL RD
9. DUBAI HILLS MALL
10. MALL OF THE EMIRATES
11. SHEIKH ZAYED RD
12. BURJ AL ARAB
13. BURJ KHALIFA



ELIE SAAB

Edition
Jasmine Lane

JUMEIRAH GOLF ESTATES

AMENITIES

- 1 THE GATE HOUSE
- 2 SPORTS ZONE
- 3 OPEN AIR FITNESS ZONE
- 4 THE SECRET LAGOON
- 5 THE CLUBHOUSE - JASMINE LANE
- 6 THE CLUBHOUSE POOL
- 7 JUNIORS PLAY ZONE
- 8 JUNIORS POOL
- 9 COMMUNITY LANDSCAPE

TOWNHOUSES TYPES
TOTAL 138 UNITS

	3BR END TYPE 1	19 UNITS
	3BR END TYPE 3	07 UNITS
	3BR MID TYPE 2	112 UNITS



THE CLUBHOUSE

- JUNIOR & ADULT POOL
- INDOOR GYM
- CHANGING ROOMS
- SHOWER ROOMS
- SAUNA AND STEAM ROOMS
MALE AND FEMALE
- WAITING AREA



Disclaimer: All images used are for illustrative purposes only and do not represent the actual size, features, specifications, fittings, and furnishings. The developer reserves the right to make revisions / alterations, at its absolute discretion, without any liability whatsoever.



FLOORPLANS



Disclaimer: All images used are for illustrative purposes only and do not represent the actual size, features, specifications, fittings, and furnishings. The developer reserves the right to make revisions / alterations, at its absolute discretion, without any liability whatsoever.

FLOOR PLAN TYPE 1A END UNIT

NO. OF BR	3BR END UNIT
UNIT AREA	1879 SqFt
TERRACES /BALCONY	130 SqFt
COVERED GARAGE	213 SqFt
TOTAL AREA	2222 SqFt
PLUS:	
SHADED GARAGE	227 SqFt
UNCOVERED DECK	198 SqFt

GROUND FLOOR



*POOL IS NOT INCLUDED - FOR ILLUSTRATION ONLY

FIRST FLOOR



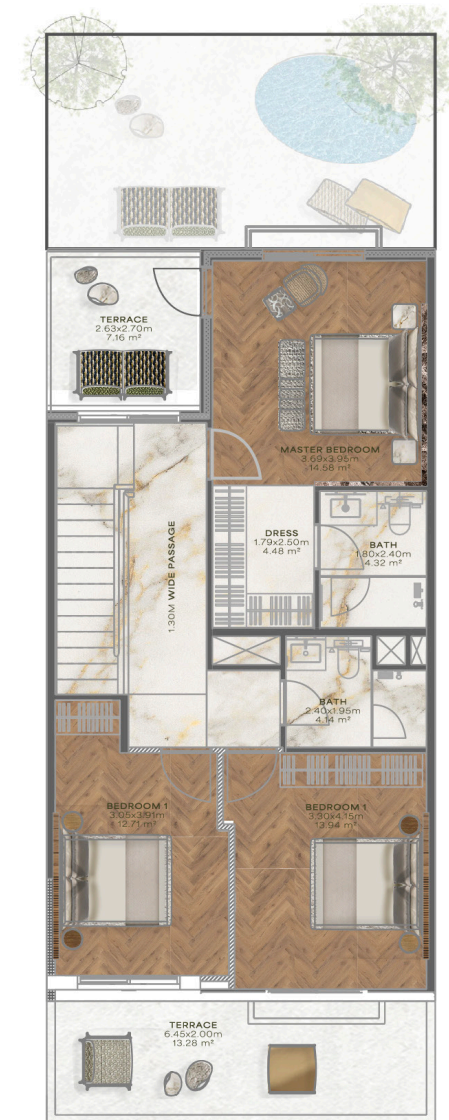
FLOOR PLAN TYPE 2A MID UNIT

NO. OF BR	3BR MID UNIT
UNIT AREA	1627 SqFt
TERRACES /BALCONY	249 SqFt
COVERED GARAGE	325 SqFt
<hr/>	
TOTAL AREA	2201 SqFt
<hr/>	
PLUS:	
SHADED GARAGE	99 SqFt
UNCOVERED DECK	71 SqFt

GROUND FLOOR



FIRST FLOOR



Disclaimer: All images used are for illustrative purposes only and do not represent the actual size, features, specifications, fittings, and furnishings. The developer reserves the right to make revisions / alterations, at its absolute discretion, without any liability whatsoever.

*POOL IS NOT INCLUDED - FOR ILLUSTRATION ONLY

FLOOR PLAN TYPE 3A END UNIT

NO. OF BR	3BR END UNIT
UNIT AREA	1878 SqFt
TERRACES /BALCONY	177 SqFt
COVERED GARAGE	277 SqFt
TOTAL AREA	2332 SqFt
PLUS:	
SHADED GARAGE	317 SqFt
UNCOVERED DECK	196 SqFt

GROUND FLOOR



FIRST FLOOR



*POOL IS NOT INCLUDED - FOR ILLUSTRATION ONLY



Disclaimer: All images used are for illustrative purposes only, and do not represent the actual size, features, specifications, fittings, and furnishings. The developer reserves the right to make revisions / alterations, at its absolute discretion, without any liability whatsoever.

ELIE SAAB

Edition

Jasmine Lane

