

CREEK WATERS

DUBAI CREEK HARBOUR



EMAAR

CREEK WATERS

DUBAI CREEK HARBOUR

EMAAR



CREEK WATERS

DUBAI CREEK HARBOUR



CREEK WATERS

DUBAI CREEK HARBOUR

EMAAR



CREEK WATERS

DUBAI CREEK HARBOUR

EMAAR

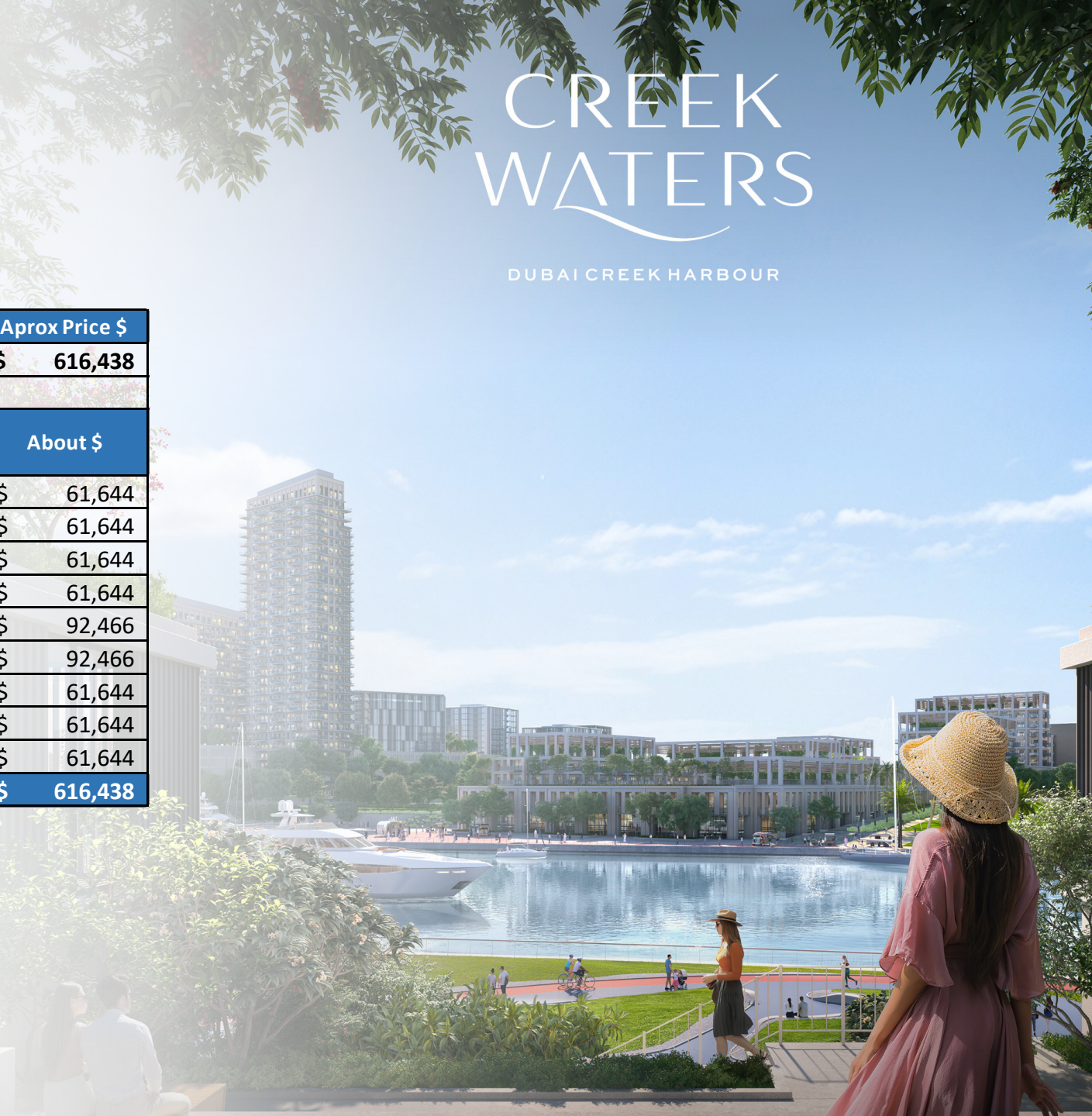
Creek Waters



CREEK WATERS

DUBAI CREEK HARBOUR

Project	Type	APROX Total Area	Aprox Price AED	Aprox Price \$
Creek Waters - 2 BED	Apt	1200 SQFT	AED 2,250,000	\$ 616,438
Milestone	%	Date	Total Amount (AED)	About \$
1st Instalment	10%	Booking	AED 225,000	\$ 61,644
2nd Instalment	10%	Jun-23	AED 225,000	\$ 61,644
3rd Instalment	10%	Dec-23	AED 225,000	\$ 61,644
4th Instalment	10%	Jun-24	AED 225,000	\$ 61,644
20% Construction	15%	Feb-25	AED 337,500	\$ 92,466
40% Construction	15%	Sep-25	AED 337,500	\$ 92,466
60% Construction	10%	Apr-26	AED 225,000	\$ 61,644
80% Construction	10%	Oct-26	AED 225,000	\$ 61,644
100% Construction	10%	Sep-27	AED 225,000	\$ 61,644
Total	100%		AED 2,250,000	\$ 616,438



CREEK WATERS

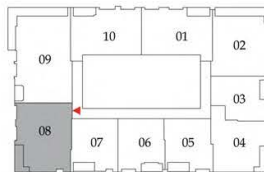
DUBAI CREEK HARBOUR

2 BEDROOM

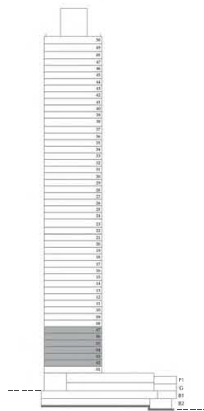
LEVEL 02 - 07 UNIT 08

SUITE AREA	1,110.94 SQ. FT.	103.21 SQ .M.
BALCONY AREA	99.89 SQ. FT.	9.28 SQ .M.
TOTAL AREA	1,210.83 SQ. FT.	112.49 SQ .M.

KEY PLAN



KEY SECTION



FLOOR PLAN 1. All dimensions are in imperial and metric, and measured from finish to finish excluding construction tolerances. 2. All materials, dimesions, and drawings are approximately only. Information is subject to change without notice, at developer's absolute discretion. 4. Actual area may vary from the stated area. 5. Drawings not to scale. 6. All images used are for illustrative purposes only and do not represent the actual size, features, specifications, fittings, and furnishings. 7. The developer reserves the right to make revisions / alterations, at it's absolute discretion, without any liability whatsoever.